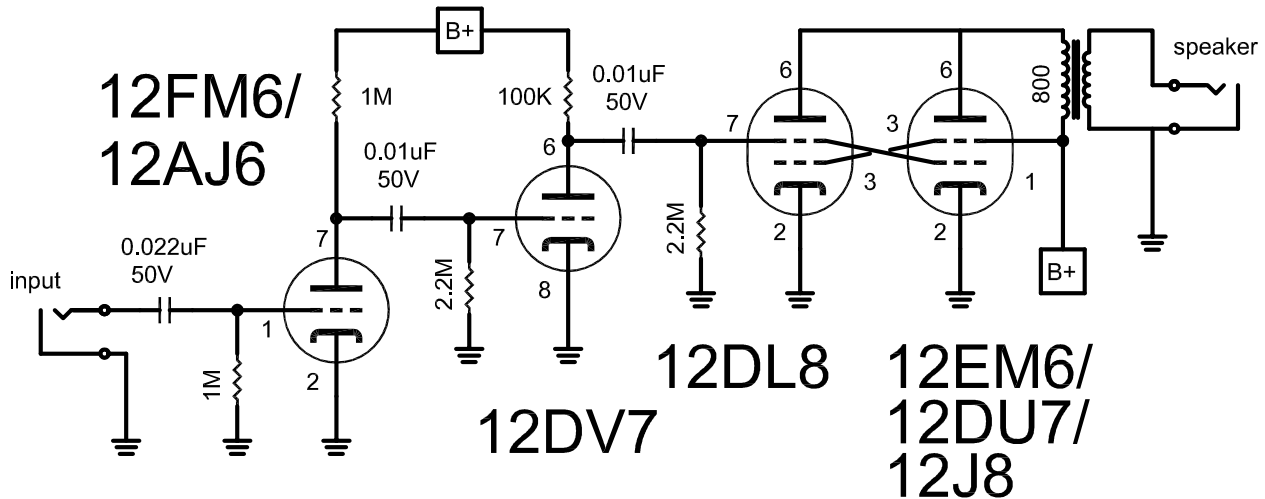
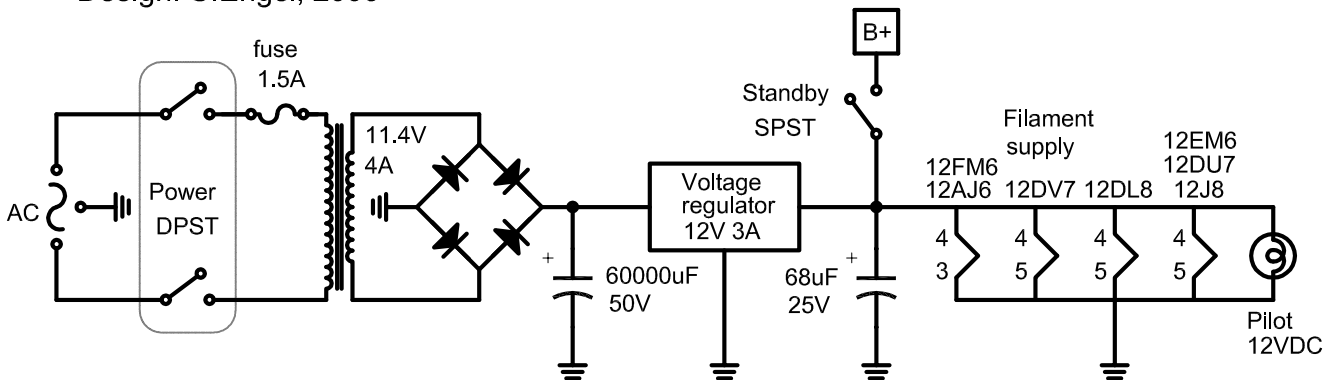


Space Charger v2.02

Pay attention: this amp requires only a 12V power supply! No hi-voltage transformers!



Design: S.Engel, 2006



Notes:

1. Power transformer is 11.4V @ 4A. 4A is minimum rating, the more amperes your transformer puts out the more headroom you will get. Switching transformers work, but use at least 100W switching transformer. Generally, any 4+A 12V fluorescent light transformer will do the job.
2. Output transformer is a line transformer (no gap needed). OT Primary resistance = 800 Ohm.
3. Change the first preamp tube to 12AJ6 for a louder distorted sound or to 12FM6 for a cleaner output.
4. It is possible to run two different output tubes in parallel as shown.
It produces slight chorusing and fattens the sound. Running two big tubes together (like 12DL8 and 12EM6) may require too much filament current and make the amp shut down.
5. The circuit has lots of bass frequencies in the output signal and may be used with bass too.
It may sound a bit too fat on guitar with a regular 12", but it sounds right with small speakers.
6. The amp is very quiet at full volume but it still sounds like a real tube amp maxed out.
You can record or jam at home while your family is asleep without bothering to wake anyone up.